

Candle Add-On

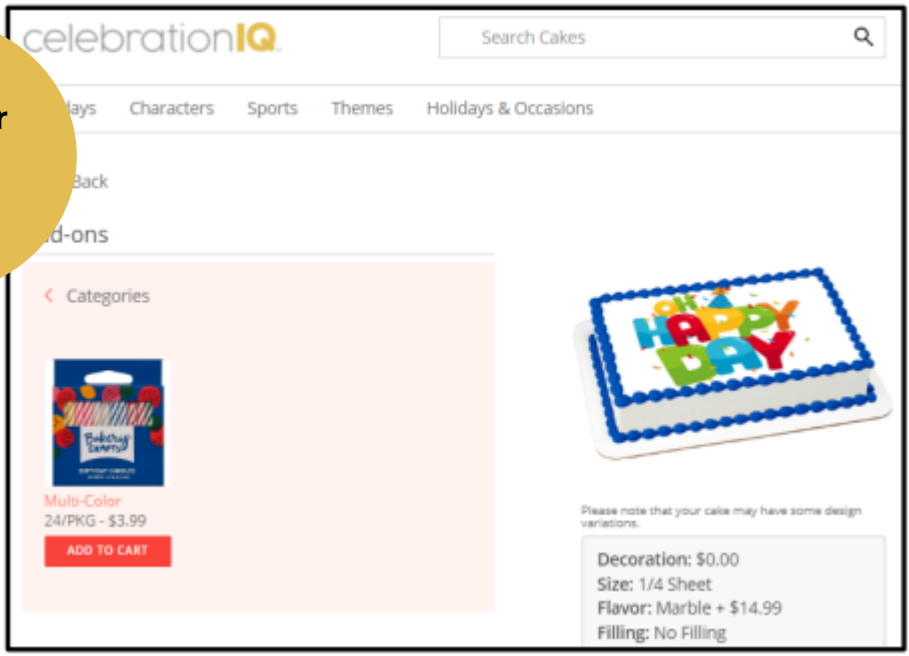
celebrationIQ™



Improving your average CIQ order with Candles

- Strategy: Offer your customers the ability to add on candles to their personalized cake order. Keep it simple start by offering two styles.
- Use your current candle rack or the counter display box can be placed on your cake case or behind the case for easy decorator accessibility.

**Customer
Ordering
Process**



Candle Counter Display Item #6557 12/pkg of Smooth & Spiral candles item #9687



Multi-Color Smooth & Spiral Candles Item #9687 (12/pkg)

Musical Happy Birthday Candle Counter Display Item #37723 36/pkg



Musical Happy Birthday Candles Item #8770 (12/pkg)



Numeral Options



Metallic Numeral Candles 6/pkg

- #0 Item #28743
- #1 Item #28744
- #2 Item #28745
- #3 Item #28746
- #4 Item #28747
- #5 Item #28748
- #6 Item #28749
- #7 Item #28750
- #8 Item #28751
- #9 Item #28752

Party Purple Numeral Candles 6/pkg

- #0 Item #6980
- #1 Item #6981
- #2 Item #6982
- #3 Item #6983
- #4 Item #6984
- #5 Item #6985
- #6 Item #6986
- #7 Item #6987
- #8 Item #6988
- #9 Item #6989
- ? Item #18193

Mini Gold Numeral Candles 6/pkg

- #0 Item #24459
- #1 Item #24460
- #2 Item #24461
- #3 Item #24462
- #4 Item #24463
- #5 Item #24464
- #6 Item #24465
- #7 Item #24466
- #8 Item #24467
- #9 Item #24468
- ? Item #24469

Shaped, Character and other Candles



#28757 Feliz Cumpleaños
Bright Shaped Candles



#28755 Happy Birthday
Bright Shaped Candles



#28756 Happy Birthday
Gold Shaped Candles



#28754 Construction
Shaped Candles



#28753 Metallic Tall Spiral
Specialty Candles



#28760 Pokémon Poké Balls
Icon Character Candles



#28758 MINECRAFT Icon
Character Candles



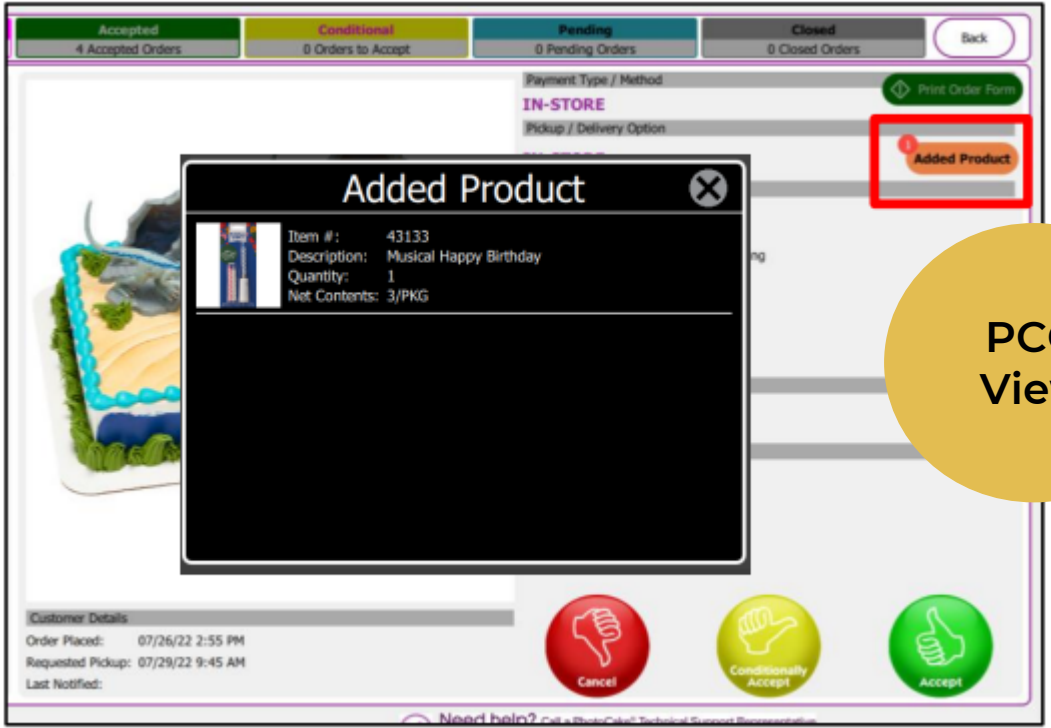
#28759 CoComelon™ Icon
Character Candles



COMING in March
#47797 Barbie™ Icon
Character Candles

Candle Add-On

Decorator Experience: Candle order information will be included on your customer's order. If the order includes an add-on candle, reference the item number and include with your cake order.



PCO View

PCLIVE View



Admin View

